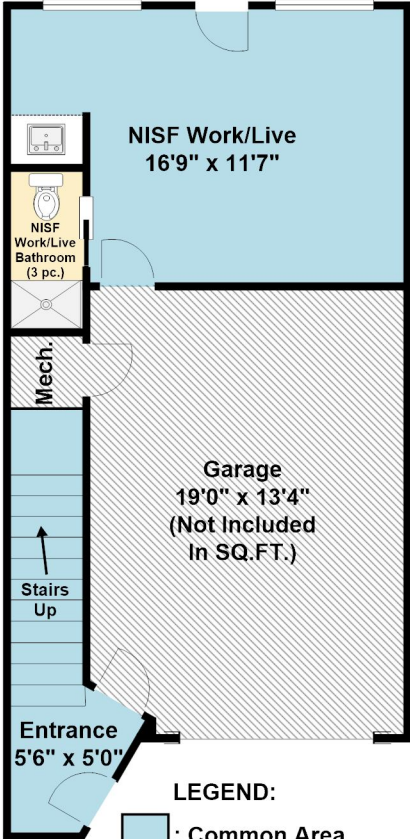


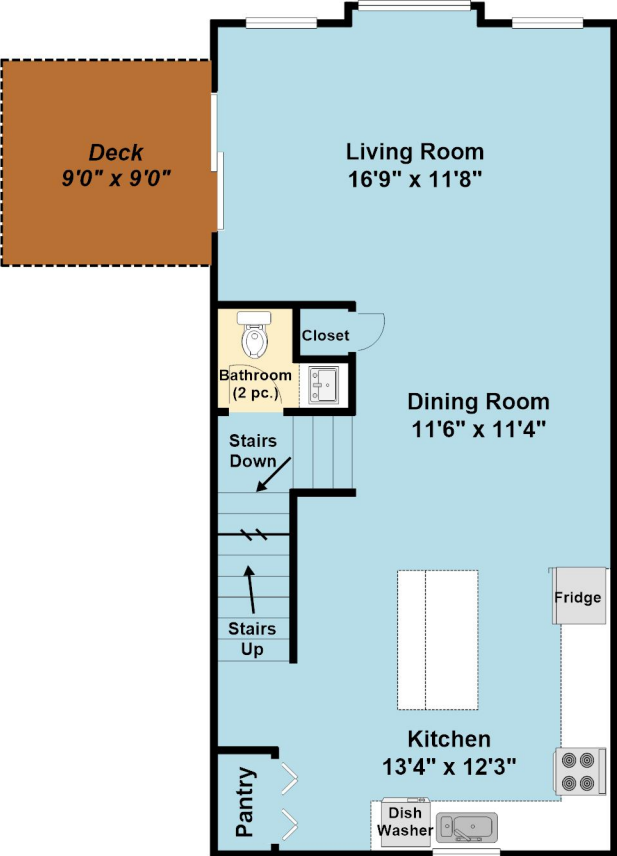
4 253 Victoria Road

Lower Floor Total: 68 SQ.FT.
 NISF Work/Live Total: 218 SQ.FT.
 Lower Floor and
 NISF Work/ LiveTotal: 286 SQ.FT.
 NISF Work/Live
 Not Included In SQ.FT.

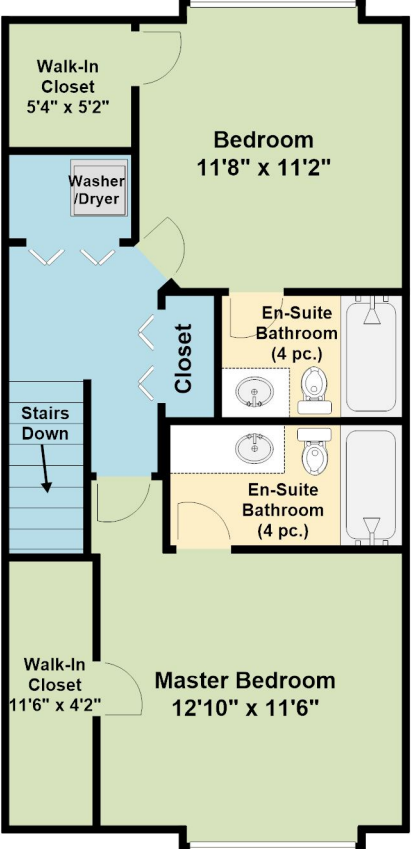


- LEGEND:**
- : Common Area
 - : Bathroom
 - : Bedroom
 - : Deck

Main Floor Total: 633 SQ.FT.
 Total: 1325 SQ.FT.
 Total with
 NISF Work/Live: 1543 SQ.FT.



Upper Floor Total: 624 SQ.FT.



Made for the Exclusive use of Jason Simard of RE/MAX of Nanaimo Realty Group by James Sigouin as measured July 26th, 2018