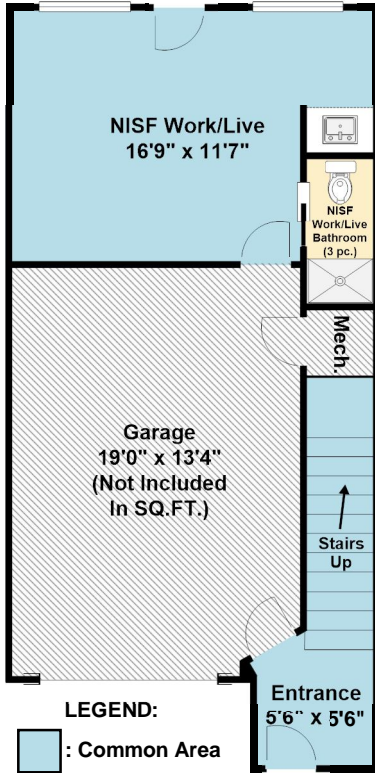


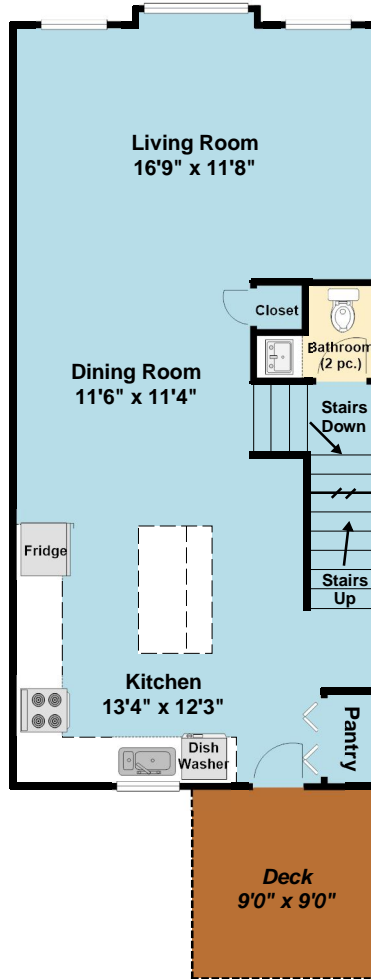
5 253 Victoria Road

Lower Floor Total: 79 SQ.FT.
 NISF Work/Live Total: 218 SQ.FT.
 Lower Floor and
 NISF Work/ LiveTotal: 297 SQ.FT.
 NISF Work/Live
 Not Included In SQ.FT.

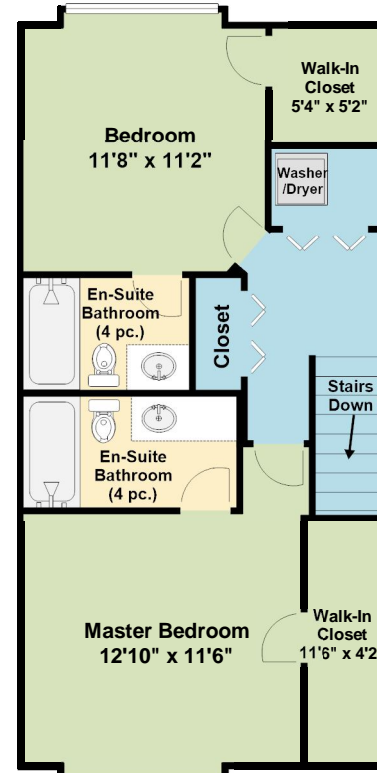


LEGEND:
 Common Area
 Bathroom
 Bedroom
 Deck

Main Floor Total: 633 SQ.FT.
 Total: 1336 SQ.FT.
 Total with
 NISF Work/Live: 1554 SQ.FT.



Upper Floor Total: 624 SQ.FT.



LOWER
 Entrance :: 5'6" x 5'6"
 NISF WORK/LIVE
 NISF Work/Live :: 16'9" x 11'7"
 MAIN
 Living Room :: 16'9" x 11'8"
 Dining Room :: 11'6" x 11'4"
 Kitchen :: 13'4" x 12'3"
 UPPER
 Master Bedroom :: 12'10" x 11'6"
 Bedroom :: 11'8" x 11'2"

Made for the Exclusive
 use of Jason Simard of
 RE/MAX of Nanaimo Realty Group
 by James Sigouin as
 measured July 26th, 2018