

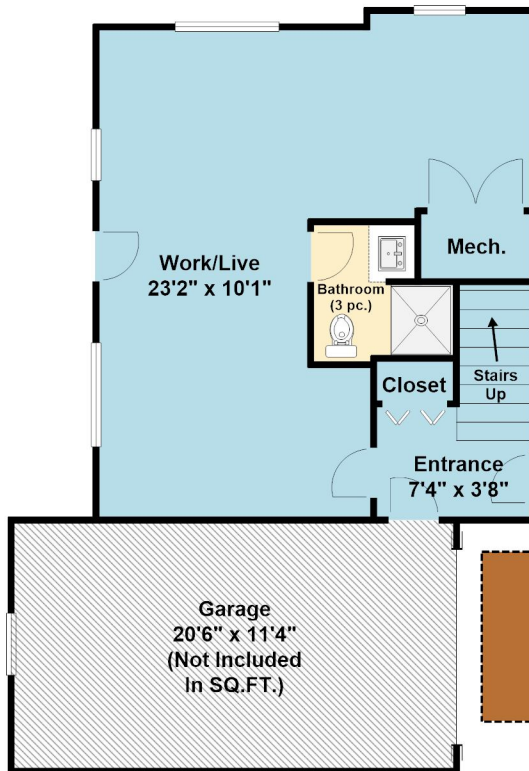
# 3 253 Victoria Road

Lower Floor Total: 490 SQ.FT.

Upper Floor Total: 720 SQ.FT.

Main Floor Total: 739 SQ.FT.

Total: 1949 SQ.FT.



## LEGEND:

- : Common Area
- : Bathroom
- : Bedroom
- : Deck



## LOWER

Entrance :: 7'4" x 3'8"

Work/Live :: 23'2" x 10'1"

## MAIN

Kitchen :: 14'4" x 12'3"

Dining Room :: 16'7" x 9'3"

Living Room :: 20'6" x 13'0"

## UPPER

Master Bedroom :: 15'7" x 11'0"

Bedroom :: 12'8" x 9'11"