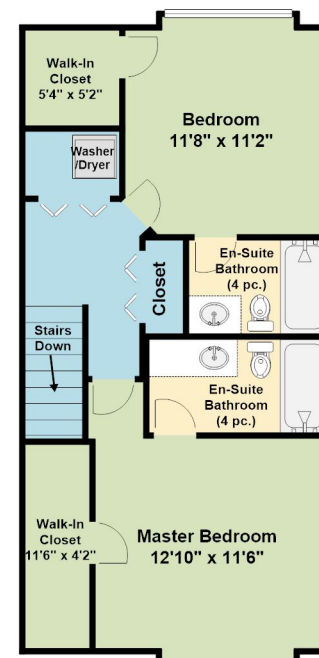
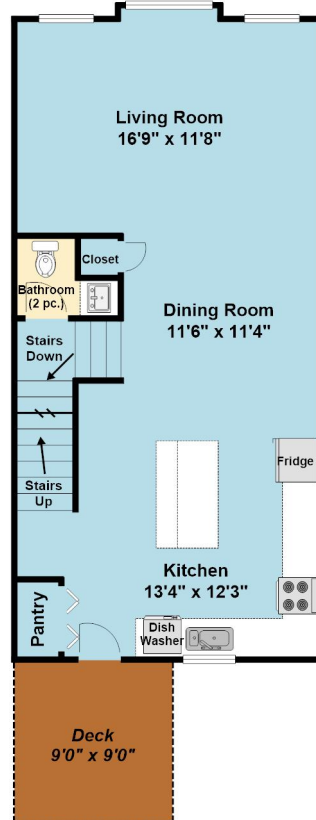
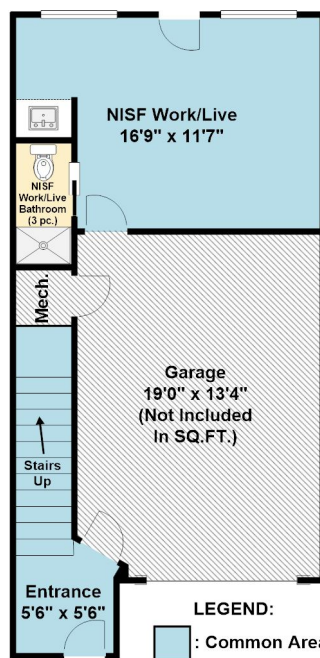


2 253 Victoria Road

Lower Floor Total: 79 SQ.FT.
 NISF Work/Live Total: 218 SQ.FT.
 Lower Floor and
 NISF Work/ LiveTotal: 297 SQ.FT.
 NISF Work/Live
 Not Included In SQ.FT.

Main Floor Total: 633 SQ.FT.
 Total: 1336 SQ.FT.
 Total with
 NISF Work/Live: 1554 SQ.FT.

Upper Floor Total: 624 SQ.FT.



- LEGEND:**
- : Common Area
 - : Bathroom
 - : Bedroom
 - : Deck

LOWER
 Entrance :: 5'6" x 5'6"
NISF WORK/LIVE
 NISF Work/Live :: 16'9" x 11'7"
MAIN
 Living Room :: 16'9" x 11'8"
 Dining Room :: 11'6" x 11'4"
 Kitchen :: 13'4" x 12'3"
UPPER
 Master Bedroom :: 12'10" x 11'6"
 Bedroom :: 11'8" x 11'2"

Made for the Exclusive use of Jason Simard of RE/MAX of Nanaimo Realty Group by James Sigouin as measured July 26th, 2018